

Detector Switches

DSI- II Series

■ Features

1. Input from 2 directions, either vertical or horizontal to the switch, possible.
2. Only 3.9mm(W)×3.3mm(D)×1mm(H), the smallest in the industry.
3. Operation force as small as 0.35N.
4. 90 degrees operation angle due to the employment of a lever shaft.
5. Two types are available of push-on and push-off.

■ Specification

1. Rating : 10 mA, 5V DC
2. Contact Resistance : 2Ω max.
3. Insulation Resistance : 100MΩ min.
4. Withstanding Voltage : 100V AC (for one minute)
5. Circuit : SPST
6. Operating Force : 0.35N
7. Travel : 1.3mm (Full) 1.0mm (On)
8. Operating System : Non-lock push-off/push-on
9. Operating Life : 50,000 cycles
10. Operating Temperature Range : -10°C to +70°C

■ Application

Mobile phones, smart phones, digital still cameras, car audios, portable audios, PCs, PC peripherals, TVs, DVD players, industrial equipment, business equipment, home appliance and healthcare products.

■ Variation

Part No.	Operating System	Boss	Lever Direction
JPS1110-6511F	Push-off	With	Left
JPS1110-6711F	Push-off	Without	Left
JPS1110-6811F	Push-on	With	Right
JPS1110-6911F	Push-on	With	Left
JPS1110-7011F	Push-on	Without	Right
JPS1110-7111F	Push-on	Without	Left

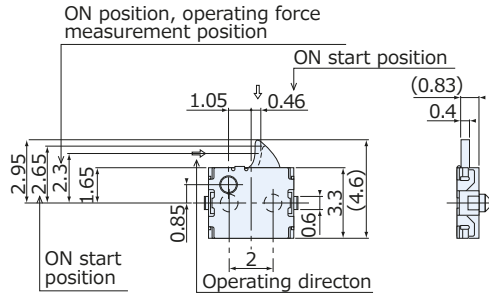
Detector Switches

DSI- II Series

JPS1110-11F

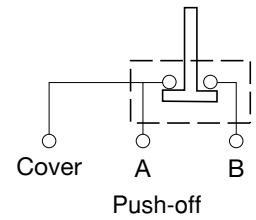


5,000 pcs/reel



JPS1110-6811F(with Boss)
JPS1110-7011F(without Boss)

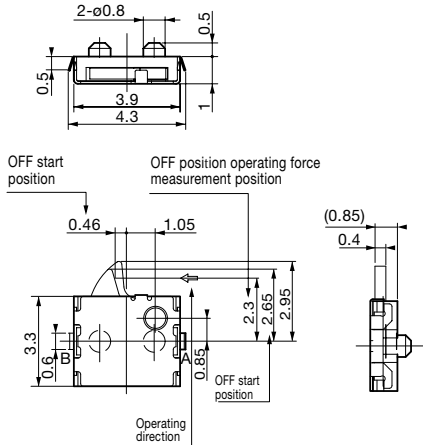
Circuit : SPST



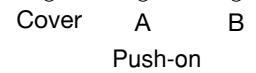
JPS1110-11F



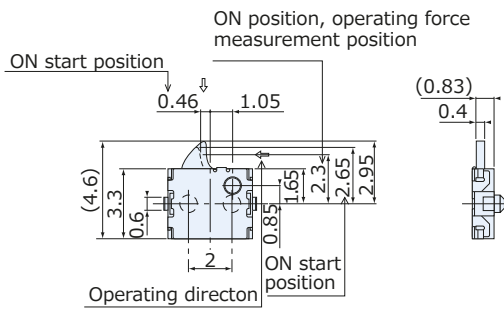
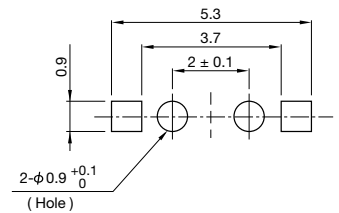
5,000 pcs/reel



JPS1110-6511F(with Boss)
JPS1110-6711F(without Boss)



P. C. Board Dimension



JPS1110-6911F(with Boss)
JPS1110-7111F(without Boss)