

# DC Power Supply Plugs/Jacks

## DC Power Supply Jack (JEITA RC-5322) : DC-5322 Series

### ■ Features

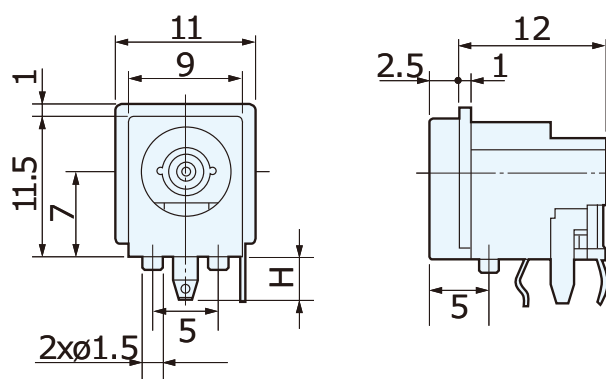
1. Conforms to the JEITA RC-5322 specifications (plugs and jacks for coupling DC 12/24V power supply to electronic equipment used in a car).

### ■ Specifications

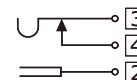
- Rated Voltage AC/DC : DC 24V, 2A max. (internal power supply),  
3A max. (external power supply)
- Contact Resistance : 30mΩ max.
- Insulation Resistance : 100MΩ min. 500V DC
- Withstanding Voltage : 500V AC (for one minute)
- Operating Temperature Range : -40℃ to +85℃
- Insertion Force : 5-25N
- Withdrawal Force : 5-30N



**LGP7031-09□□F**

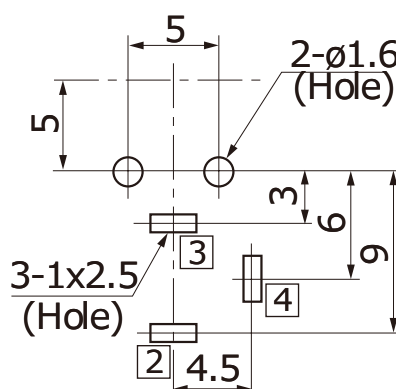


Circuit



Recommended PCB Layout (Pattern Side)

□□	H	Terminal Shape	Thickness
00	3.5	Kink Type	t=1.6



Flow Soldering