

# Detector Switches

## Detector Switches : DSC Series

### ■ Features

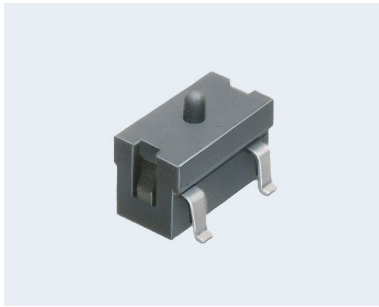
1. It is of self-cleaning structure, showing a high level of contact reliability.
2. It is serviceable as a reset switch in addition to the detector.

### ■ Specifications

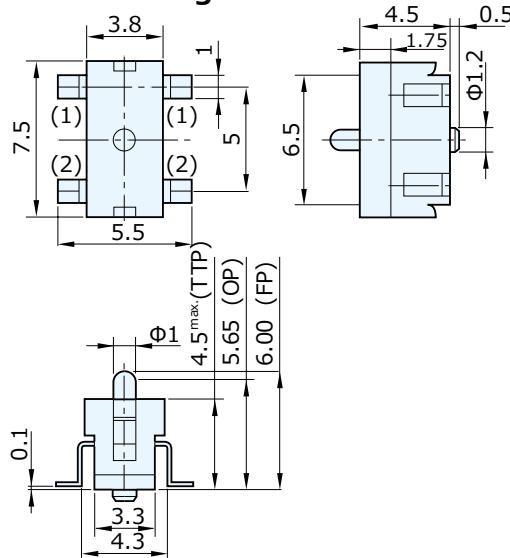
- External Dimension : 7.5 x 3.8 x 4.5mm
- Rating : DC 5V, 0.1-5mA
- Circuit : SPST
- Life Cycle : 100,000 cycles
- Operating Force : 0.25N
- Travel : 1.5mm
- Operating System : Push-off
- Packing Quantity : 1,000pcs/Reel

### ■ Product Lineup

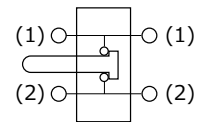
Drawing No.	Operation	Boss
JPS1110-2111F	Push-off	With



### Outline Drawing



### Circuit : SPST



### P. C. Board Dimension

