

Interface Connectors

Ethernet Connectors : SE-R1 Series

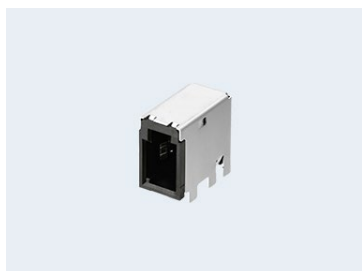
■ Features

1. 100BASE-T1 and 1000BASE-T1 compliant.
2. Applicable Cable: STP cable.
3. The narrow design with a width of 8.1mm (plug) allows for multiple uses.
4. High contact reliability with two-point contact structure.

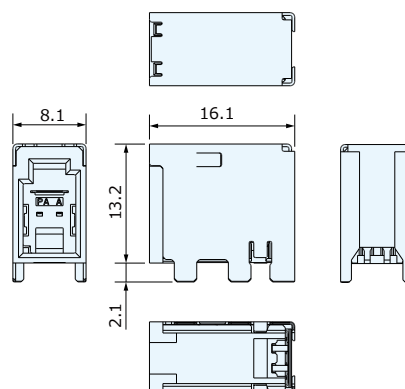
■ Specifications

| | |
|-------------------------------|--------------------------------------|
| • Number of Pins | : 2 |
| • Rated Voltage AC/DC | : 50V DC, 1A |
| • Mounting Style | : Terminal: SMT, Shell: DIP (Reflow) |
| • Mounting Direction | : Right Angle |
| • Plug Shape | : Right Angle |
| • Contact Resistance | : 25mΩ max. |
| • Insulation Resistance | : 100MΩ min. at 500V DC |
| • Withstanding Voltage | : 100V AC (for one minute) |
| • Operating Temperature Range | : -40°C to +105°C |
| • Mating Cycle Life | : 10 cycles |
| • Impedance | : 100Ω±5% |
| • Locking Strength | : 110N min. |
| • Cable Tensile Strength | : 100N min. |

□□: Part No. XX: Differs by key codes and colors. Please contact us for more information.



Plug : CSC5002-3G□□F



Cable Jack : CSS1002-69□□F

